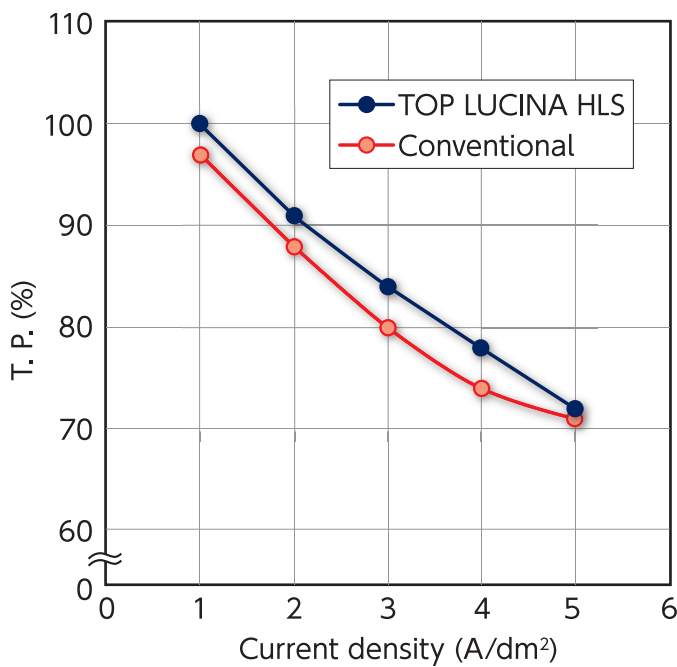


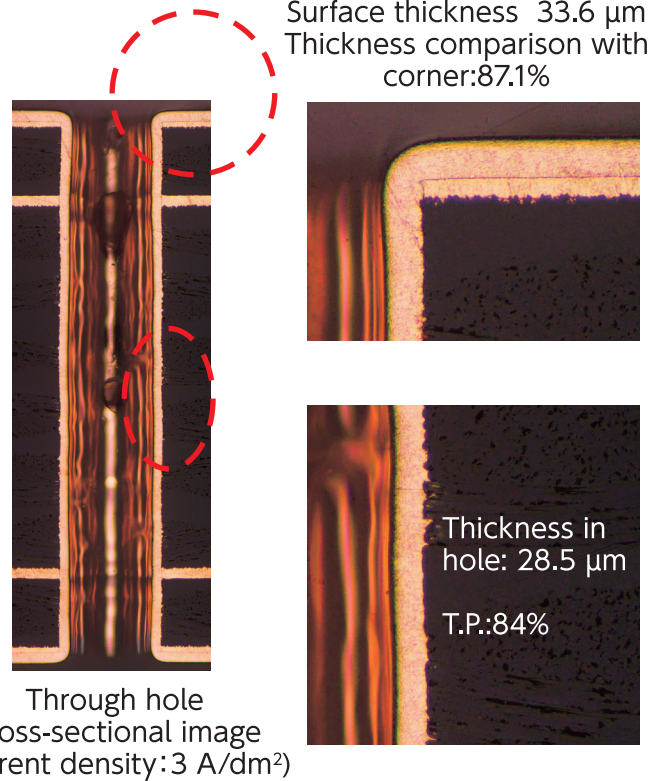
TOP LUCINA HLS

- High throwing power at wide current density
- High covering performance into conformal via

Achieve high throwing power



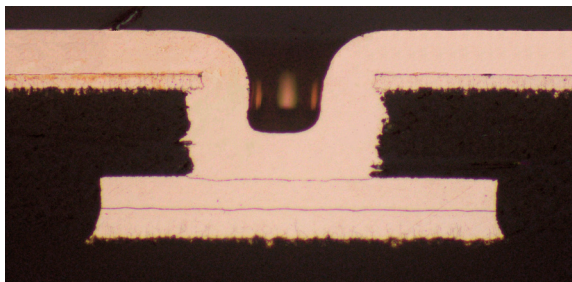
Hole diameter: 0.3 mm
Board thickness: 1.6 mm



Excellent in coverage into via

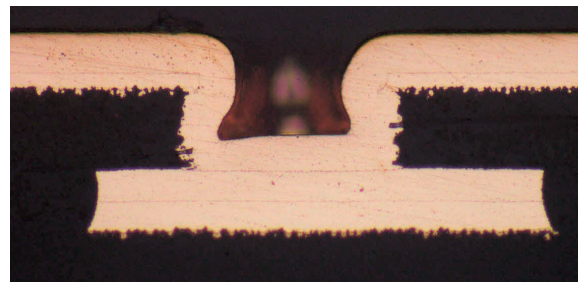
TOP LUCINA HLS

CuSO₄·5H₂O: 65 g/L, H₂SO₄: 230 g/L, Cl⁻: 40 mg/L



Conventional

CuSO₄·5H₂O: 100 g/L, H₂SO₄: 180 g/L, Cl⁻: 50 mg/L



Current density: 3 A/dm² via diameter 140 µm, via depth 80 µm